

# Field and Installation Services

## ABOUT WIDELITY

Widility is a professional services and business consulting company that provides a full spectrum of services to its clients.

## OUR COMMITMENT

Our customers come first, as we are focused on delivering value and quality service to our customers in the design and deployment of technologies that meet the needs and requirements of today's changing business environment. We pride ourselves in designing solutions that not only support today's demands, but that also accommodate future demands as our customers grow their business.

## Wireless Communications Services



We have a deep knowledge of microwave planning and installation as well, with years of experience based on our work for major spectrum holders, carriers, and service providers.

With our skilled technicians, installers, and construction managers located across the US, we are well positioned to meet the needs of our clients in the design, installation, and maintenance of wireless networks. Our crews install and build towers and install most forms of wireless equipment from cell to microwave.

Widility has the logistics, design, planning, and operational expertise to equip the field teams and our clients with the preparation and support necessary for a successful deployment. We provide our clients the dedicated management, processes & procedures, systems, facilities, and reporting for both a well-built network and operation that will meet the demanding quality standards of today's communications services.

### Widility provides turnkey installation solutions.

Widility provides a full-service offering including engineering, procurement, logistics, operations, and construction of communications solutions, with robust tower, RAN, DAS, small cell, and microwave capabilities. We have extensive experience with the construction, installation, maintenance, and repair of antenna systems, communication towers, and support structures.

Our expert teams are experienced with most major radio manufacturers and equipment types; Widility personnel are experts in engineering, surveys, real estate, project coordination, tower services, and construction management.



NETWORK DESIGN

SERVICE MANAGEMENT AND OPERATIONS

BUSINESS CONSULTING



4031 University Drive, Fairfax, VA 22030  
703-934-2038  
WWW.WIDELITY.COM

# Field and Installation Services

## WIDELITY OVERVIEW

Widely proudly serves clients in the following industries:

Telecommunications

Wireless

Infrastructure

Operations

HealthCare

Energy

Information Technology

Aerospace

Federal Government

## GSA MOBIS SCHEDULE

GS-10F-0283X

SIN 874-1: Consulting Services

SIN 874-4: Training Services

SIN 874-7: Project Management Services

## SCHEDULE 70

GS-35F-243AA

SIN 132-53: Cellular and Other

Wireless Telecommunications

## SERVICES & SOLUTIONS

Project & Program Management

Design & Engineering Services

Deployment & Integration Services

IT Consulting Services

Logistics Services

Due Diligence

Finance Management

Business Development Services

In-Building Wireless Services

Wireless Services

Managed Services

Sourcing Solutions

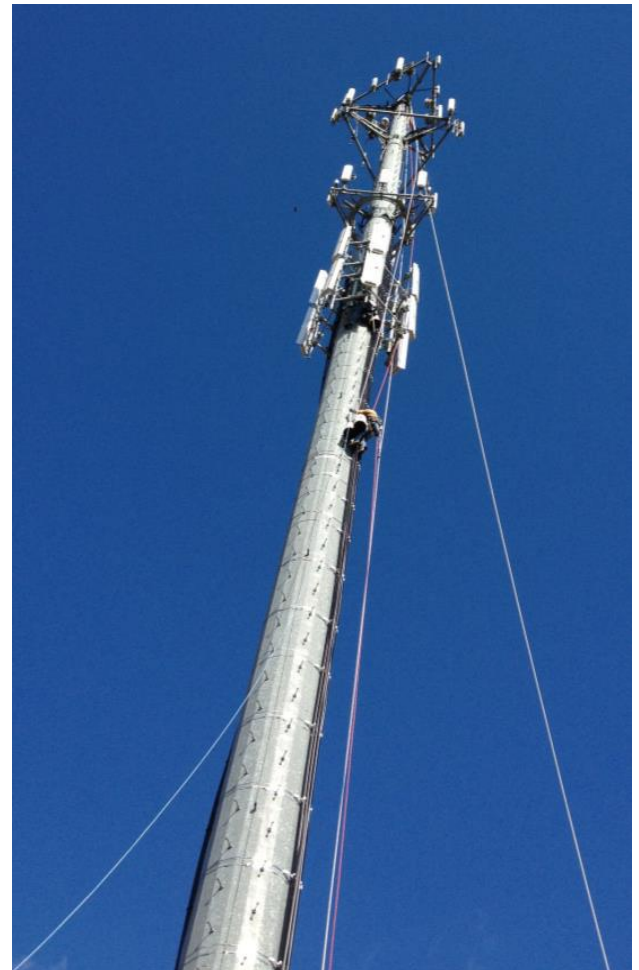
Government Services

Cloud Migration

## Widely provides a broad range of skill sets to clients.

Our hands-on teams of engineering, management, and construction professionals can provide a complete suite of wireless services for the most demanding clients. For turnkey, license preservation, microwave, backhaul, small cell, DAS, and cellular, Widely can provide the services you need, including:

- Turnkey systems integration
- License preservation
- Microwave installation
- Site surveys & line of site
- Path design and analysis
- Site acquisition
- Maintenance
- Tower construction
- High speed data backhaul
- Permitting and Zoning
- RF engineering
- Construction Management
- Civil builds
- Test and turn-up
- DAS installation
- Drive testing
- Logistics and procurement



NETWORK DESIGN

SERVICE MANAGEMENT AND OPERATIONS

BUSINESS CONSULTING



4031 University Drive, Fairfax, VA 22030

703-934-2038

WWW.WIDELITY.COM